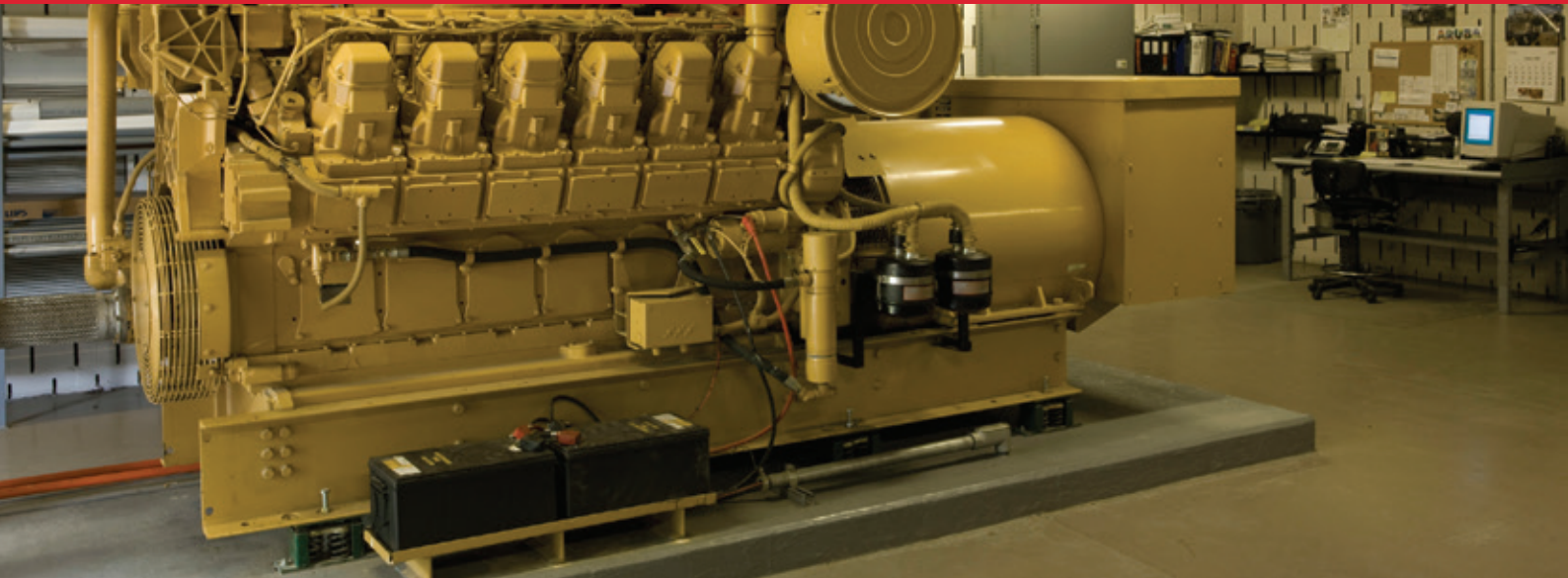


Diesel Leak Detection System



RAYCHEM
TraceTek

FM CLASS NUMBER 7745 LEAK DETECTION SOLUTIONS



nVent RAYCHEM TraceTek Diesel Leak Detection System is FM Approved per FM Standard 7745

- TraceTek system meets all requirements of Class number 7745 standard
- Detects diesel fuel leaking from tanks, pumps, valves and fittings in your emergency generator room
- Detector produces a signal within 30 seconds of diesel detection



TRACETEK DIESEL LEAK DETECTION SYSTEM INCLUDES:

- TTDM-128 Alarm Module
- TTSIM-1A or TTSIM-2 Sensor Interface Module
- TT-FFS Fast Fuel Sensor Probe
- TT5000 Fuel Sensing Cable
- Connection Accessories

TYPICAL INDOOR DIESEL FUEL MONITORING APPLICATIONS:

- Beneath day tanks
- Around pump pads
- Below valves or other flanged fittings
- Near threaded indoor pipe couplings
- At flexible hose couplings to engine injector pumps

TRACETEK



TRACETEK DIESEL LEAK DETECTION SYSTEM IS FM APPROVED PER FM STANDARD 7745

TTDM-128 ALARM MODULE

- Multiple event tracking capability for up to 127 independent sensor circuits
- Complete remote operation and monitoring through Modbus communications
- Directly monitors up to 1500 m (5000 ft) of sensor cable and/or four TT-FFS probes

TTSIM-1A OR TTSIM-2 SENSOR INTERFACE MODULE

- Monitors up to 150 m (500 ft) of TraceTek sensing cable and up to four TT-FF probes per circuit
- Can communicate to a monitoring system such as a TraceTek TTDM-128 or directly to a PLC or other host system using standard protocols
- Can be standalone leak detection alarm unit, or in networks with other TraceTek modules
- Available in 12 Vdc, 24 Vdc, 24 Vac, 120 Vac, and 230 Vac versions

TT-FFS FAST FUEL SENSOR

- Fast response (within seconds) to small amount of fuel
- Resets for multiple uses
- Wet or dry locations (ignores water)

TT5000 FUEL SENSING CABLE

- Detects the presence of liquid hydrocarbon fuels at any point along its length
- Does not react to the presence of water
- Designed for a variety of applications, including tanks, trenches and piping
- Locates the source of any detected leak to +/- 1 m (3 ft)

North America

Tel +1.800.545.6258
Fax +1.800.527.5703
thermal.info@nvent.com

Europe, Middle East, Africa

Tel +32.16.213.511
Fax +32.16.213.604
thermal.info@nvent.com

Asia Pacific

Tel +86.21.2412.1688
Fax +86.21.5426.3167
cn.thermal.info@nvent.com

Latin America

Tel +1.713.868.4800
Fax +1.713.868.2333
thermal.info@nvent.com



Our powerful portfolio of brands:

nVent.com

CADDY ERICO HOFFMAN RAYCHEM SCHROFF TRACER